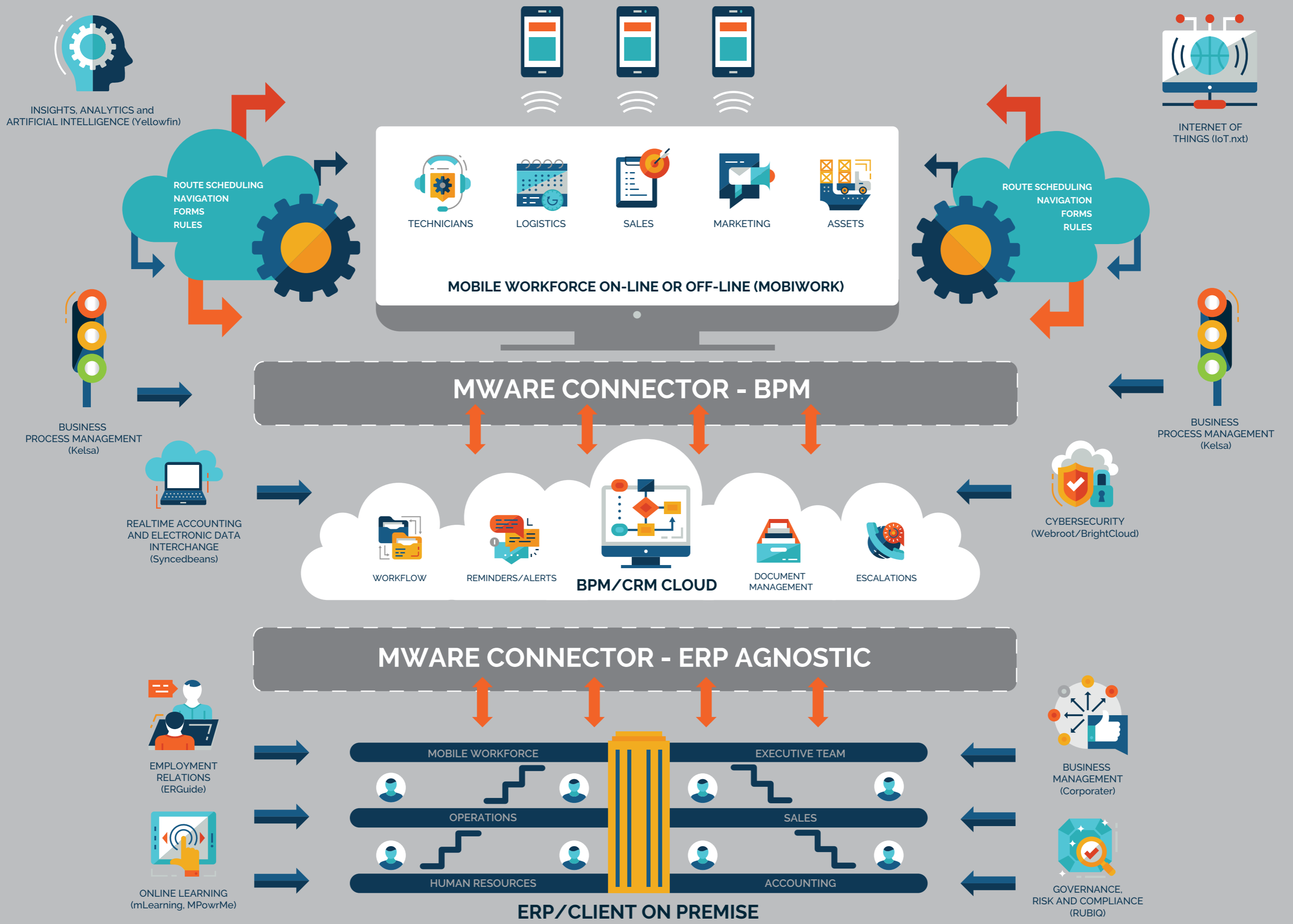




MWare Solution Stack

www.mware.co.za



With the MWare Solution Stack we provide our customers with automated business solutions that are enabled using best-of-breed products. We don't rip and replace and we allow you to prosper as you grow. Our business performance solutions are created with our customers' needs in mind and with the understanding of how they will use these value enhancing solutions to help grow their business. Our aim is to assist our customers to be more efficient, organised, secure, successful and ultimately more profitable.

Corporater

The Corporater Business Management Platform (BPM) gives customers a holistic view of their business. It links management disciplines such as strategy, risk, operations, quality, projects, processes, HR and finance within a single view to provide the context needed to make the right business decisions. Corporater solutions are used by organisations worldwide to manage performance, control and mitigate risk, and provide guidance on GRC (Governance, Risk and Compliance) regulations. The three peaks of the Corporater BMP – Performance Management, GRC, and Digital Transformation – cover a wide span of solution areas. All Corporater BMP solutions are complete, scalable, and adaptable to any existing tools and applications.

ERGuide

The ERGuide is a practical, country specific guide to assist Managers and Human Capital practitioners, in making informed employment relations decisions, taking practical compliant actions. The ERGuide is the anywhere, anytime guide to sound employee relations via mobile or any other internet enabled device.

MobiWork

MobiWork's smartphone and cloud-based mobile workforce solutions are geared to any business with employees in the field such as Field Service, Field Sales, Field Marketing, and Logistics. Each productivity solution is based on a 'mobile first' and patented platform that is easy to use and pre-configured to meet the needs of any business in any industry. The office-based workforce use the convenience of the web while the mobile workforce uses advanced native applications either on a smartphone, tablet or rugged device.

Sage 300 Toolkit

Offers feature-rich plugins to the existing Sage 300 Financial and Operational environment. These applications enhance user productivity by changing the way users interact with Sage 300 on a day-to-day basis and simplify often tedious and overwhelming tasks.

Webroot and Brightcloud

The Webroot® Threat Intelligence Platform is a cloud-based architecture that classifies and scores 95% of the internet 3x per day. With over 10 years' experience innovating in the field of cutting-edge machine learning technology, Webroot Threat Intelligence provides the accuracy and context organizations and vendors need to protect themselves and their customers. Webroot has redefined online threat intelligence to secure businesses and individuals in a connected world. Stop reacting to online attacks. Start proactively protecting against even never-before-seen threats by integrating BrightCloud Threat Intelligence Services.

Yellowfin

Things change. Know why. Insights that matter, when they matter. A powerful suite of BI and analytics products that will change the way you discover and share insights, so you can make the best decisions, faster. With Yellowfin Dashboards powered by Assisted Insights instantly providing the 'why', Yellowfin Signals automatically alerting you as changes occur and Yellowfin Stories providing context and narrative that can be shared, your business can finally, be truly data-driven.

Syncedbeans

Syncedbeans is a network enabling commercial information exchange between customers, suppliers and accountants in real time. No more paper, no more tedious manual capture of supplier invoices. Supplier receipts and invoices are submitted directly by connected suppliers, emailed or captured with a mobile app. Collected images are processed utilizing google vision powered OCR. Smart mapping of supplier invoice lines to expense accounts or customer inventory learns your expense allocation and inventory rules.

RUBiQ

The on-demand, centralised GRC platform for any organisation. RUBiQ is a cloud-based platform utilising the latest technologies to deliver a truly unique, comprehensive and dynamic Governance, Risk and Compliance ("GRC") management system for any size organisation, anywhere in the world. RUBiQ is quickly implemented, efficient to use, and affordable to organisations of all sizes.

mLearning

The Mobile Learning Revolution by MWare. Mobile learning is rapidly becoming the norm of eLearning and a successful eLearning platform caters to mLearning by default. Why does mobile learning encourage skills development? Learners are more motivated to browse through screens of mobile courses than ones on the desktop. By using a smartphone eLearning becomes a favourite pastime as opposed to reading online articles or browsing social media pages!

MPowrme

MPowrMe is a skills development platform specifically targeted toward business skills, aimed at improving individual performance and operational efficiency. All programmes are unit standard and NQF aligned, based on specific outcomes specified within the Qualification Framework in South Africa.

IoT.nxt

Unlocking The Edge. Any industry. Any system. Any process. IoT.nxt has developed a world leading framework that makes the efficiencies, cost savings and increased revenue from IoT a reality for businesses. The major strength of the IoT.nxt framework is that the solution is technology agnostic, which overcomes the challenge of connecting any and all devices or systems. This enables you to deploy best of breed technologies (hardware/sensors/subsystems) but at the same time also achieve interoperability and interconnectivity between all the currently deployed systems and devices from the edge to the cloud. The IoT.nxt platform allows rapid deployment and businesses to action an Internet of Things strategy with little or no disruption to your current operations.

Kelsa

Kelsa is a cloud based no code workflow automation tool which helps you improve efficiency as you build run, repost & optimize your business process all within an intuitive user friendly interface. It evolves as your business evolves. Unlike rigid platforms, Kelsa is designed to meet the ever changing needs of businesses. It's highly-customisable and highly-collaborative. Easy to integrate both people and processes.